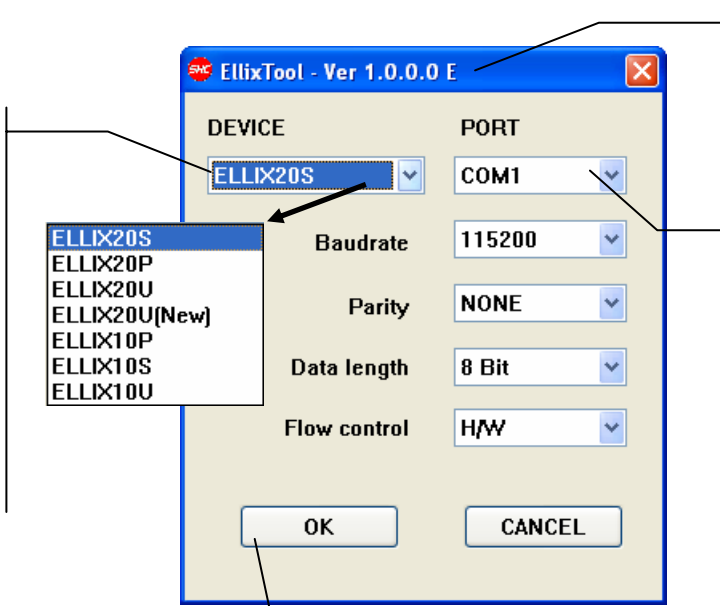


Using the EllixTool PC Utility

The EllixTool PC utility conveniently combines the functions of separate Ellix 10/20 utilities for firmware downloading, image loading and watermark enabling.

- ▶ For images see “Downloading NV Images to an ELLIX Printer” on page 2
- ▶ For Ellix 20 Options (Watermark) see “User Setup (Ellix 20)” on page 7
- ▶ For Firmware updates, see “Firmware Download” on page 8

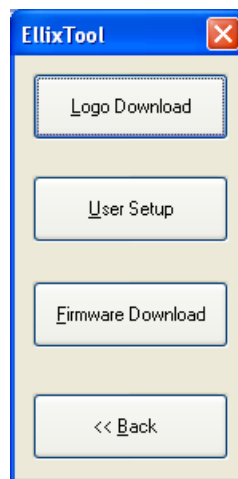
2. Open the Device list box. Select the appropriate printer and interface. S=Serial P=Parallel U=USB



1. Connect your PC to the printer with the appropriate cable and start the EllixTool.

3. Select the port you are using and any settings necessary for the port. (Serial ports require baudrate/parity/etc settings).

4. Click OK to display the EllixTool main menu.



Downloading NV Images to an ELLIX Printer

Image Specification

- Maximum Horizontal Pixels =512 (Ellix 20); 384 (Ellix 10)
(Width/Height values must be multiples of 8)
- Must be Black/White Image

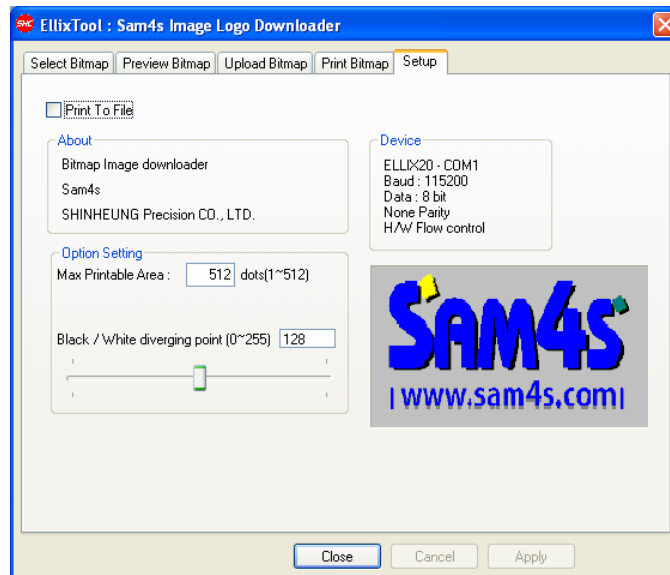
If using Microsoft Paint:

1. Set Bit Map size:
 - Select IMAGE
 - Select ATTRIBUTES
 - Set Units = PIXELS
 - Set Colors = Black and White
 - Set Width/Height
(Maximum Width: 512 pixels; Width/Height values must be multiples of 8)
2. Save image as 24-bit bitmap (.bmp)

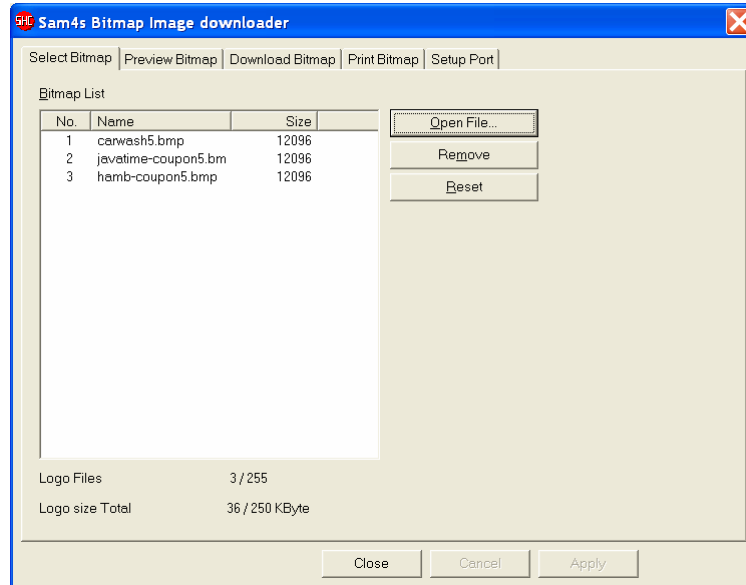
Image Downloading

You can download non-volatile (NV) images from a PC to an ELLIX 10/20 Receipt Printer Up to 256K of image memory is available. Images must be in “.bmp” format.

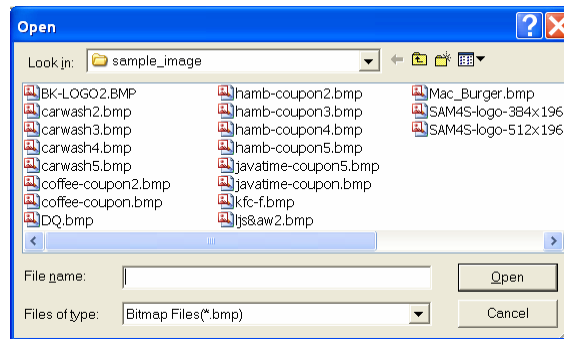
1. Connect your PC to the Ellix printer.
For Ellix 20 Serial use CRS P/N 522087, DB-9F to Serial Printer DB-25M.
For Ellix 10 Serial use CRS P/N 522122; DB-9F to Serial Printer RJ-45
2. From the EllixTool main menu select DownLoad Logo.



3. Click the **Select Bitmap** tab.

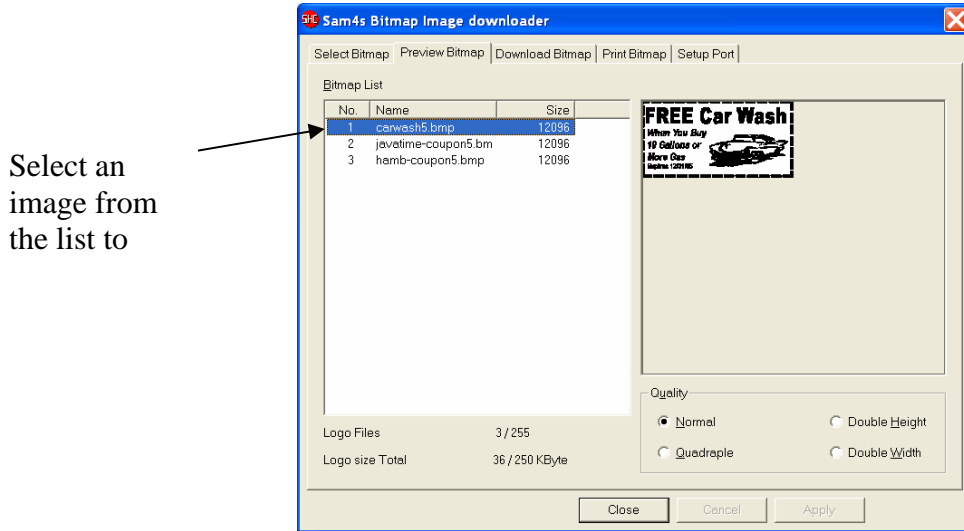


4. Click **Open File** to select a bitmap image.

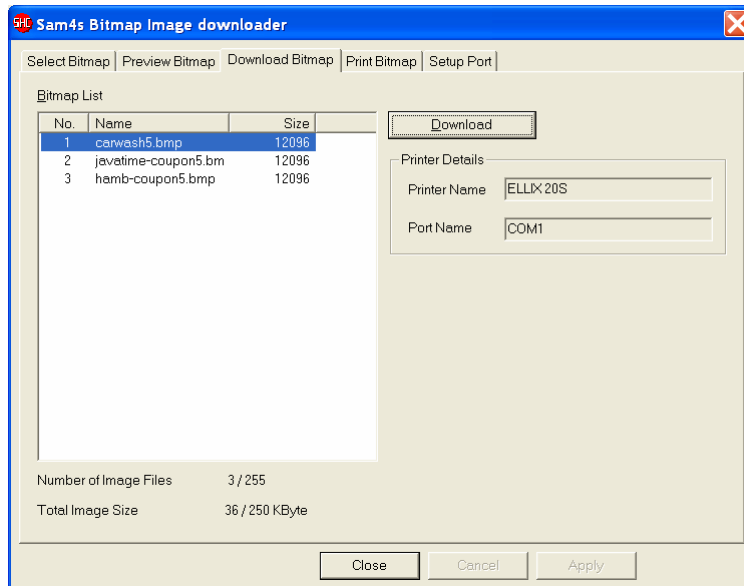


5. Find the folder and image file you wish to use. Click **Open** to add the image to the list.

- Click the **Preview Bitmap** tab and select the image to preview it.



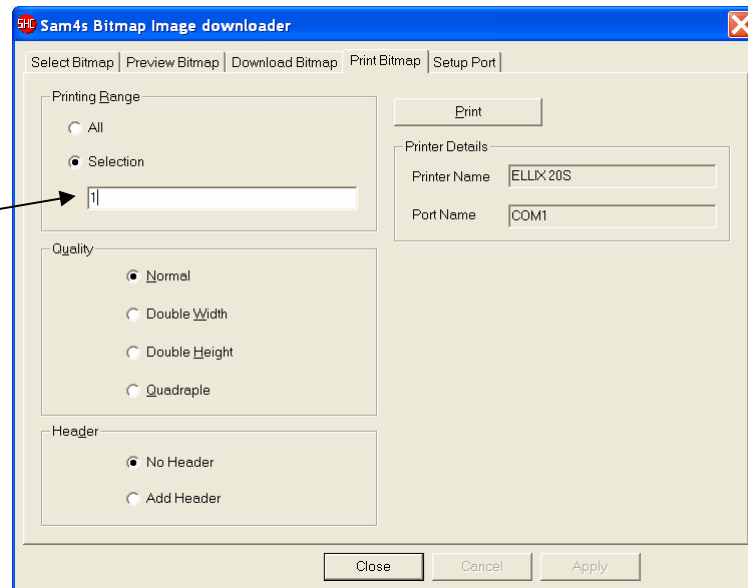
- Select the **Download Bitmap** tab.



- Click **Download**. A message displays when the download is complete. After completion, the printer must be powered off and then on again.

9. You can test print the image by selecting the **Print Bitmap** tab.

For example,
print image
#1.

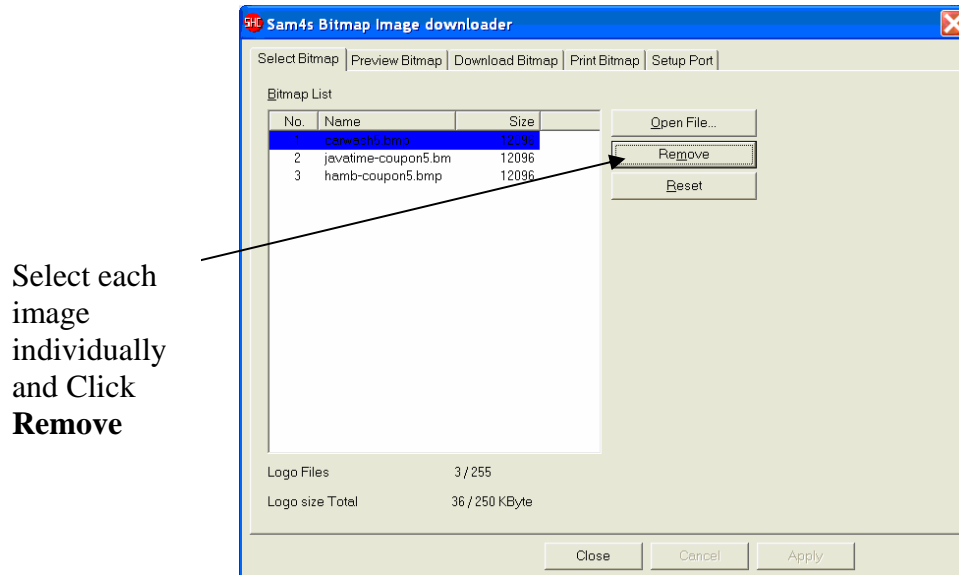


10. At Printing Range, choose the **Selection** option button and type the number of the image you wish to print. (If you select all, it may take some time since it will be reading empty memory for unused images.)
11. Click **Close** to close the utility.

Removing Images

If you wish to clear all images from a printer, you must create an “empty” list of images, and then download the images.

1. From the **Select Bitmap** tab, select each image individually and select **Remove**, until all images are removed from the list.

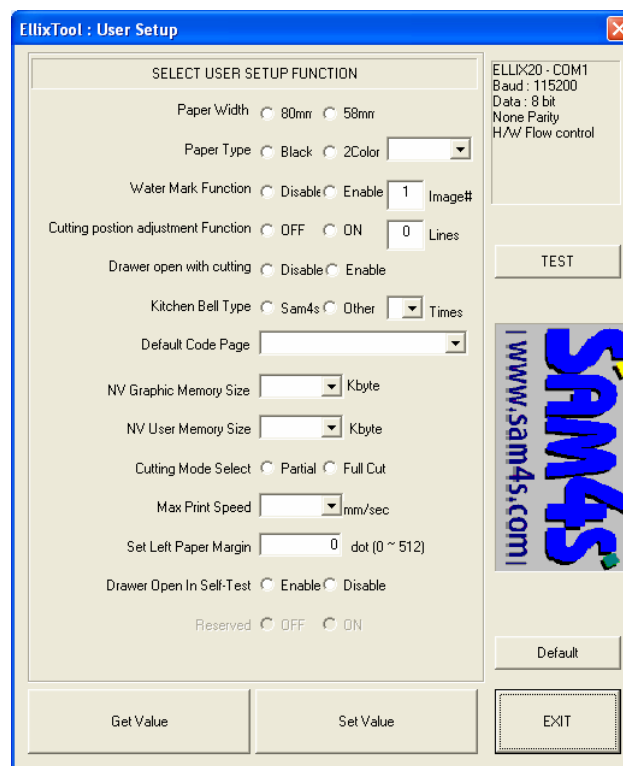


2. When all images are removed, select the **Download Bitmap** tab. Click the **Download** command button to download the empty set of images. All images will be removed from the printer.

User Setup (Ellix 20)

A background Image (watermark) can downloaded and printed continuously as receipts are printed. Other Ellix 20 printer options, such as paper width, kitchen alarm, and paper cutting are also selected here.

1. You must download firmware version 1.23 (E20_060522_5CA4.E20) or later to the Ellix 20 printer. See “Firmware Download” on page 8 of this document.
2. Download the image you wish to use as a watermark. See “Downloading NV Images to an ELLIX Printer” on page 2 of this document.
3. Verify that the printer is connected to the PC using the appropriate cable.
4. From the EllixTool main menu select **User Setup**.

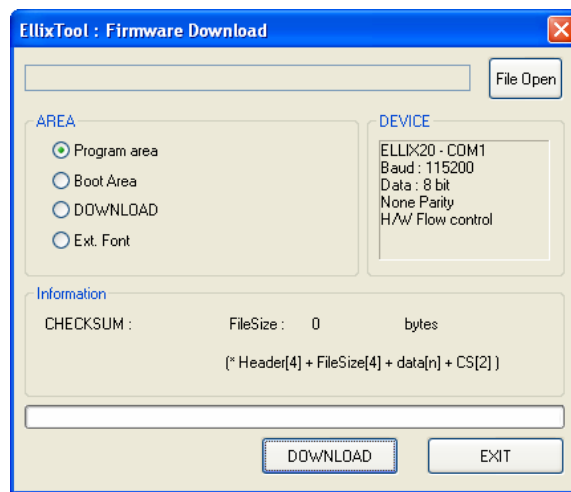


5. Click **Get Value** to read the current printer values. Make settings as appropriate. To set the watermark, select the Water Mark Function “Enable” option and enter the number of the NV image to be used.
 - ▶▶ Click **Set Value** to download the new setting. You will hear a short paper feed at the Ellix 20
 - ▶▶ Click **Test** to print a utility test print
 - ▶▶ Click **Default** to restore default printer settings
6. Click **Exit** to exit the User Setup dialog.

Firmware Download

Ellix 20

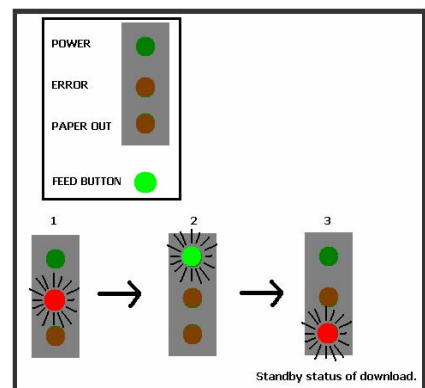
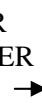
1. Before beginning the update, check the existing firmware version number of your ELLIX 20 printer. (Power up the ELLIX 20 with the **FEED** pressed to print the version number.) If your ELLIX 20 firmware version is lower than "STD 1.06", you need update both Program area and BOOT area. (See step #14.)
2. Visit www.crs-usa.com and download the latest firmware from the Ellix 10/20 dealer support page. The program file will have the file extension "E20", for example "E20_070509_84FE.E20". Note the folder location where you extract this file.
3. Select Firmware Download for the EllixTool main menu. The program window displays:



4. Click **File Open** and open the program file.
5. Power **OFF** the ELLIX 20.
6. Set all ELLIX 20 dip switches to **OFF**.
7. Verify that the PC is connected to the ELLIX 20 printer with the appropriate serial or parallel cable.

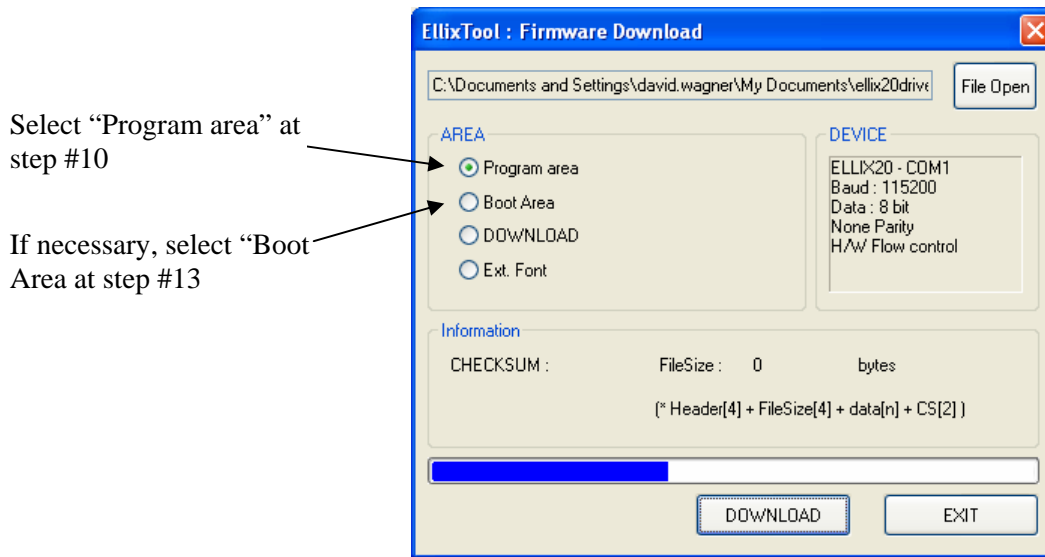
8. Open the Printer cover all of the way. Power **ON** the ELLIX 20 while holding the **FEED** button. (Note that when the printer cover is open, the **FEED** button is the green button located inside the printer compartment.) Continue to hold the **FEED** button until the PAPER OUT LED is **ON**.

(Note the LED sequence during power up: First the ERROR LED is ON, then the POWER LED is ON and then the PAPER OUT LED is ON.)



9. The ELLIX 20 is now ready for the firmware download.
10. Leave the Program Area option button selected (default).

11. Click **DOWNLOAD** to begin the download. The progress bar will advance as the download proceeds.



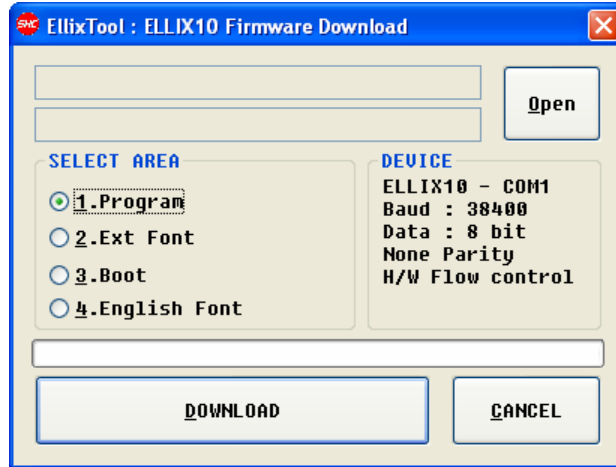
12. When Download is completed, the ELLIX 20 buzzer will activate and the LED will blink, and then it will turn off automatically.
13. If you are updated a printer with a firmware version is lower than "STD 1.06", now select the "Boot Area" option button. Click **DOWNLOAD** to begin the boot area download. When Download is completed, the ELLIX 20 buzzer will activate and the LED will blink, and then it will turn off automatically. Skip this step if you are only updating the program area.
14. Power the ELLIX 20 **ON** again. The printer will now operate under new downloaded program.

CAUTION: Don't pull out the cable or turn off power during the updating operation. If problems occur during updating, flash memory may be damaged and ELLIX 20 will not operate properly.

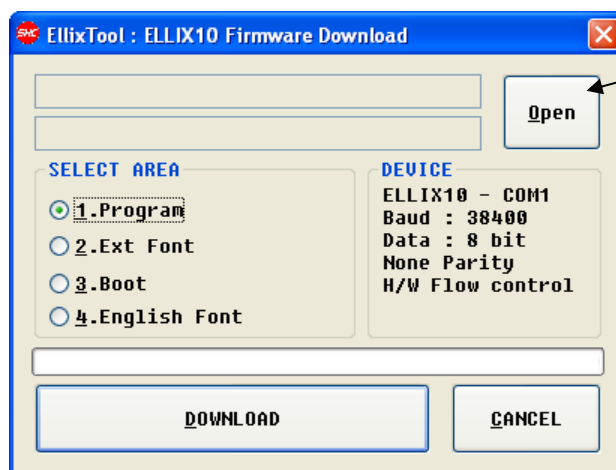
NOTE: If download program's progress bar is not going forward, check the cable connection between PC and ELLIX 20.

Ellix 10

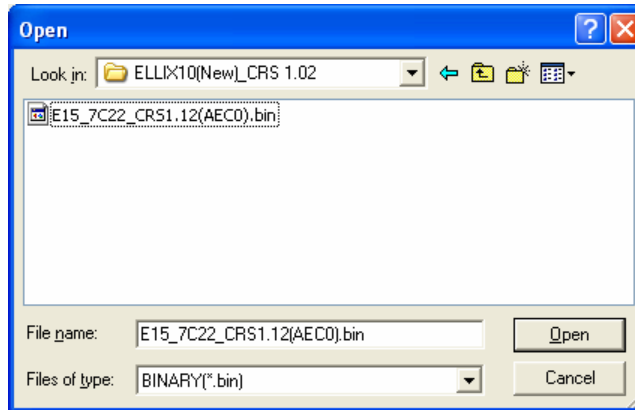
1. Before beginning the update, check the existing firmware version number of your ELLIX 10 printer. (Power up the ELLIX 10 with the **FEED** pressed to print the self test with the version number.)
2. Visit www.crs-usa.com and download the latest firmware from the Ellix 10/20 dealer support page. The program file will have the file extension “E20”, for example “E20_070509_84FE.E20”. Note the folder location where you extract this file.
3. Select Firmware Download for the EllixTool main menu. The program window displays



4. Power **OFF** the ELLIX 10.
5. Open the printer cover.
6. With the printer cover open, press and hold the green paper feed button and then press the power button. Continue to hold the paper feed button. The red paper feed LED will illuminate momentarily, then the red error LED will illuminate. Release the paper feed button.
7. Connect the PC to the ELLIX 10 printer with the appropriate cable.
8. The ELLIX 10 is now ready for the firmware download.
9. Click **OPEN** to locate the correct BIN file.

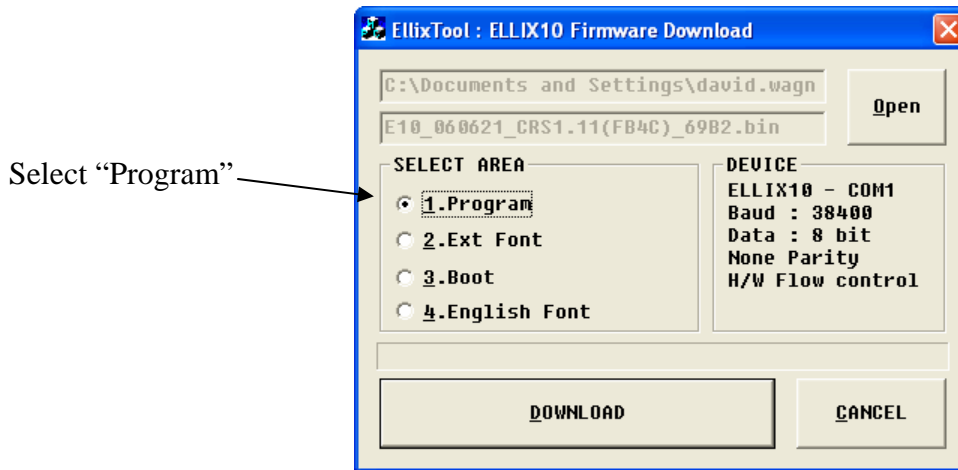


10. The Open dialog displays.

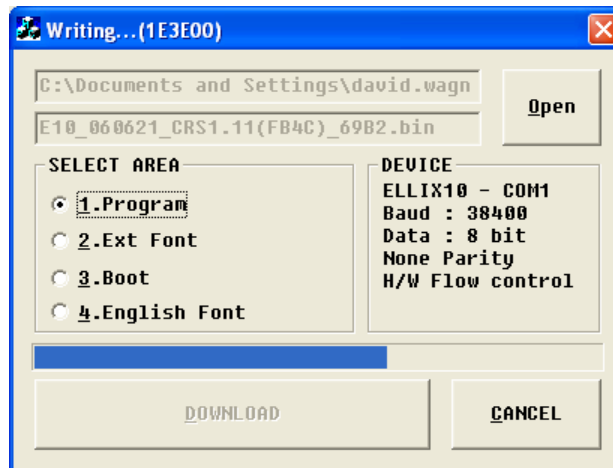


11. Locate the folder and file where you stored the downloaded BIN file. Select the BIN file and click **Open**. The selected bin file will display on the second line of the utility window.

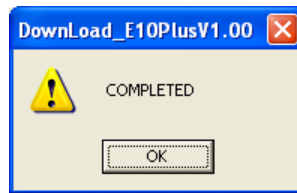
12. Select the “Program” option button (default).



13. Click **DOWNLOAD** to begin the download. The progress bar will advance as the download proceeds.



14. When Download is completed, the completed dialog will display.



15. Power the ELLIX 10 **OFF** and **ON** again. The printer will now operate under new downloaded program.

CAUTION: Don't pull out the cable or turn off power during the updating operation. If problems occur during updating, flash memory may be damaged and ELLIX 10 will not operate properly.

NOTE: If download program's progress bar is not going forward, check the cable connection between PC and ELLIX 10.