

SNBC BTP-2002NP WIFI Installation Guide

Resources Required

Hardware

- Printer: SNBC BTP-2002NP WIFI Interface
- PC: RealTek RTL8187 Wireless 802.11g 54 Mbps USB 2.0 Network Adaptor

Utilities & Files

- New UB801R.zip (Driver Installation & related files)
- Printer Firmware Version FV4.110 or later
- BYNetWinConfig.exe (Network Configuration Utility—posted online in SNBC_Network_ConfigurationV2.0.zip)

Preparing the Printer

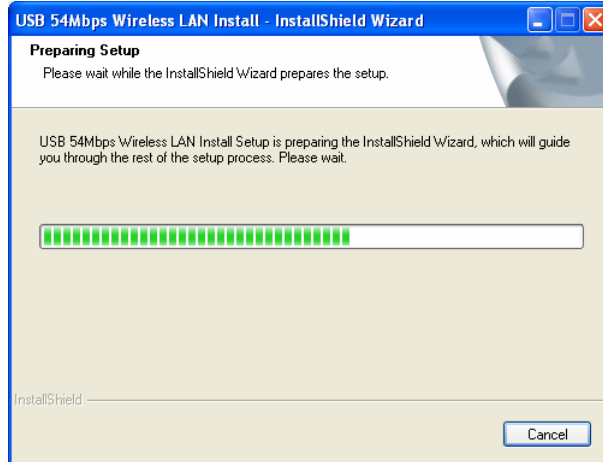
1. Install the WIFI Interface card.
2. Perform a printer self-test (power on with the feed key pressed.)
3. Verify firmware and interface:

Main Firmware	:FV4.110 (or later)
Interface Type	:Wi-Fi
SSID	:defaultSSID
Mode	:Ad-Hoc
Interface Firmware	:FV1.001 (or later)
IP Address	:192.168.0.200
MAC Address	:00C001 3A49FF
SUBNET Mask	:255.255.255.0
GATEWAY	:192.168.0.1
DHCP	:Disabled

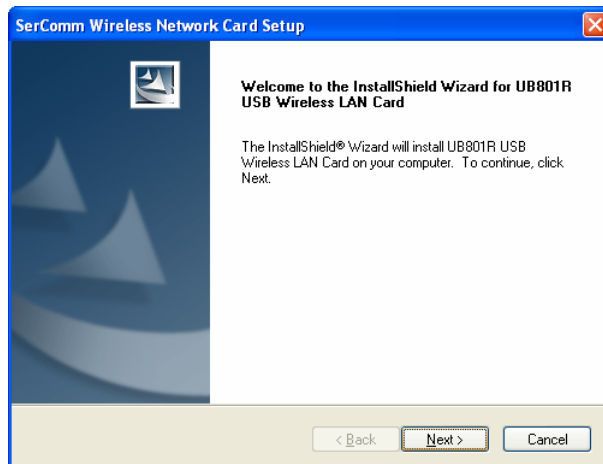
PC Driver Installation

Note: Do Not Attach the WIFI device until instructed to do so.

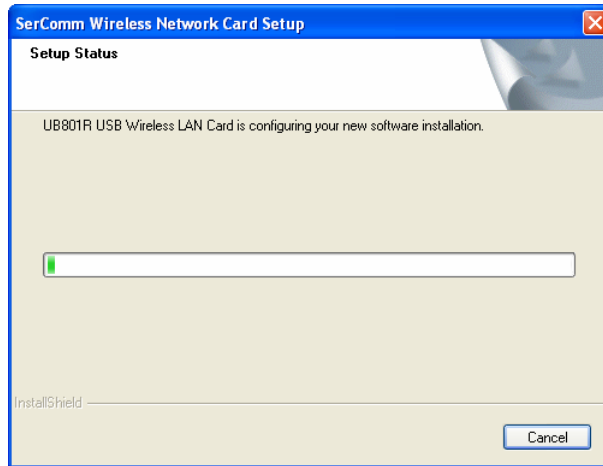
1. Unzip “New UB801R.zip” and execute “setup.exe”. The “Preparing Setup” screen will display momentarily . . .



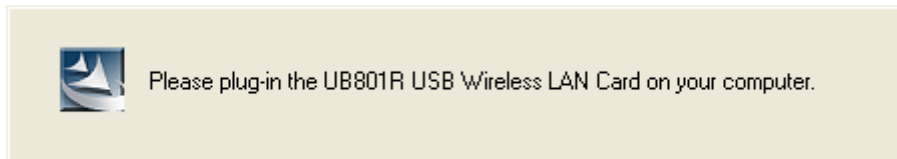
2. Then the installation wizard window displays:



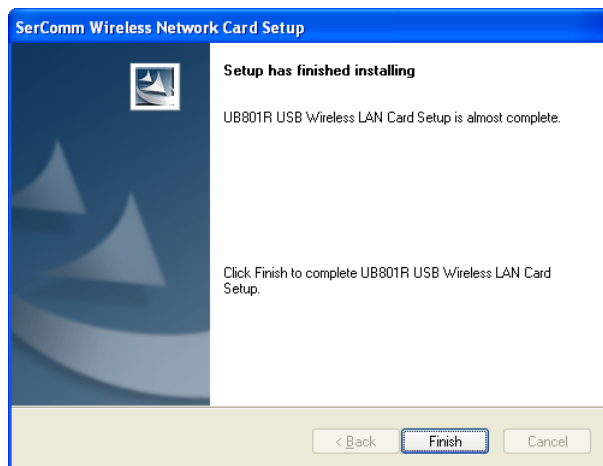
3. Click **Next**. The status bar will track the installation.



4. When complete, you will be asked to connect the wireless LAN card.



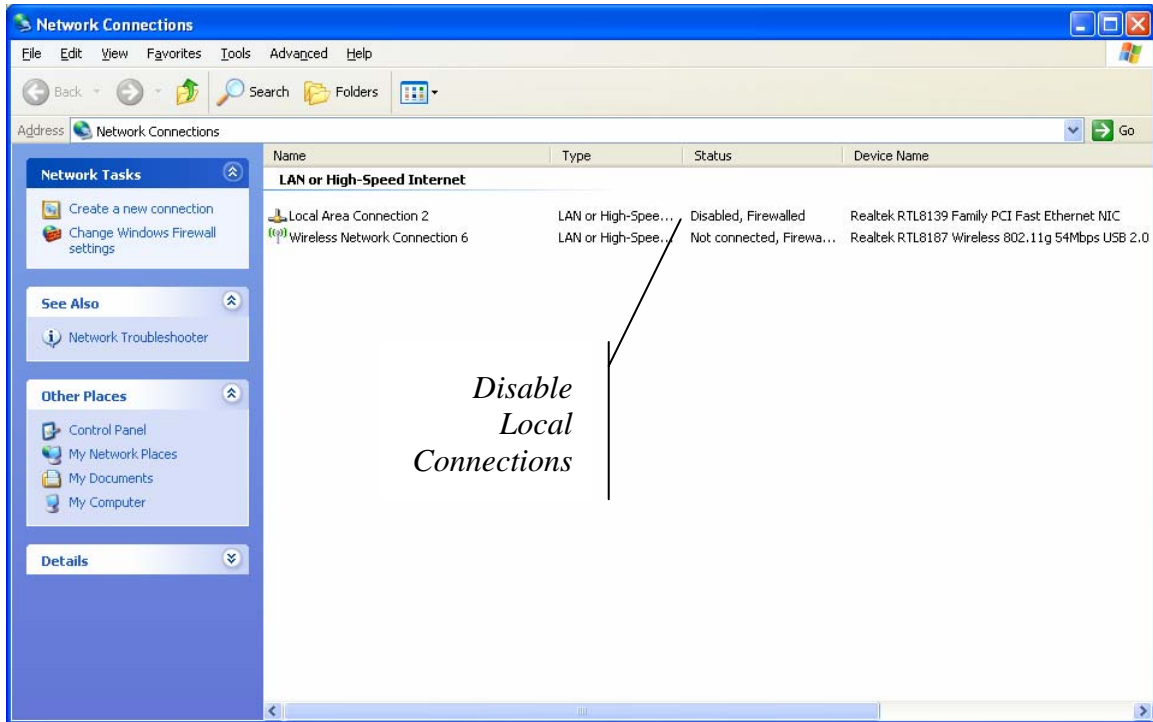
5. Connect the LAN Card; the Wizard window indicates the installation is complete.



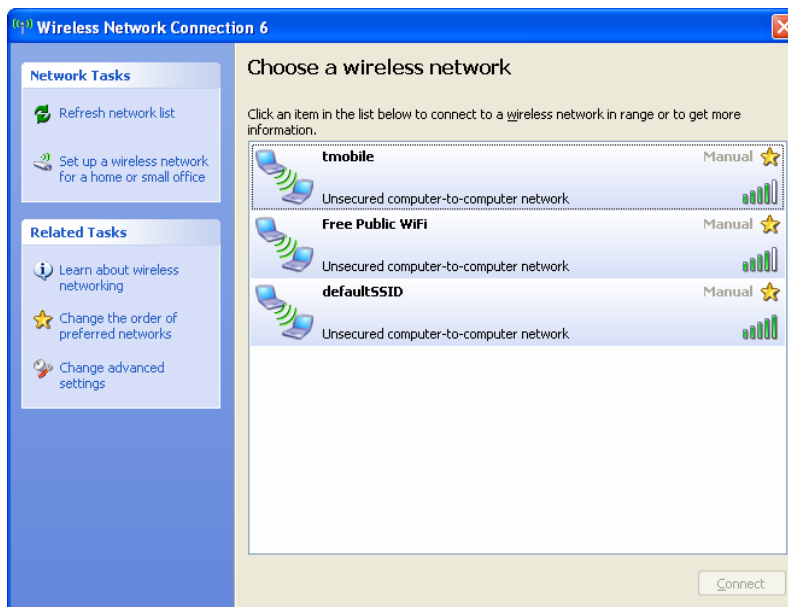
6. Click **Finish** to complete the driver installation.

Configuring Network Connections

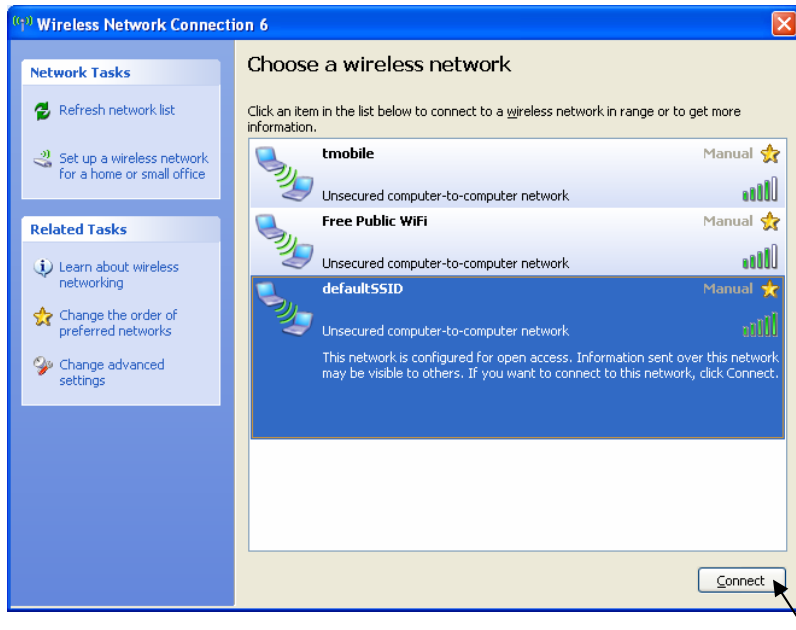
1. To view network connections, click **Start, Settings** and then **Network Connections**.
2. If a local internet connection is enabled, it must be disabled. Right-click on the network connection on the list and select **Disable**.



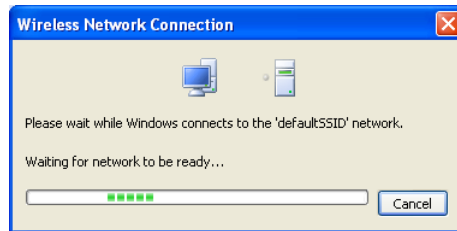
3. Double-click the wireless connection on the list.



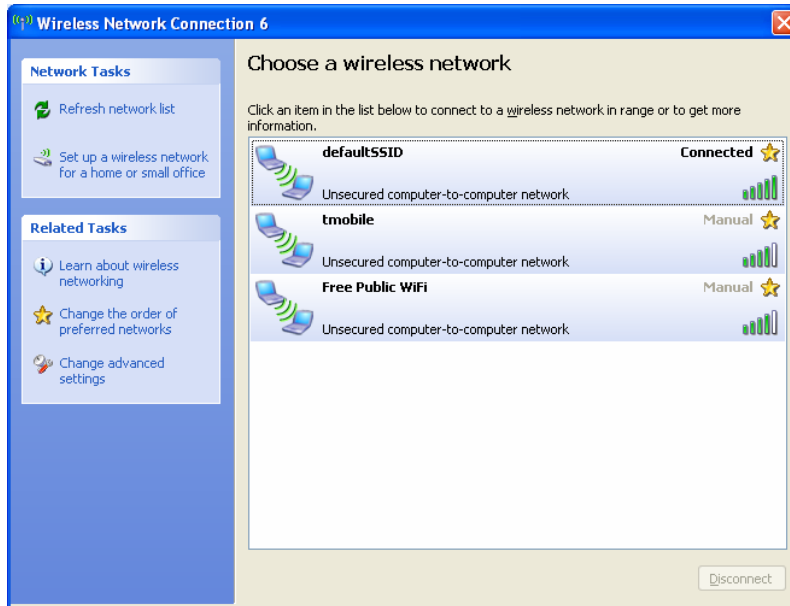
4. The list of available wireless networks will display. Select “defaultSSID”.



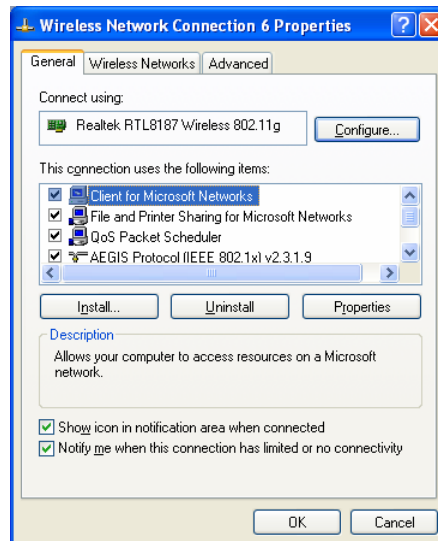
5. Click **Connect**.



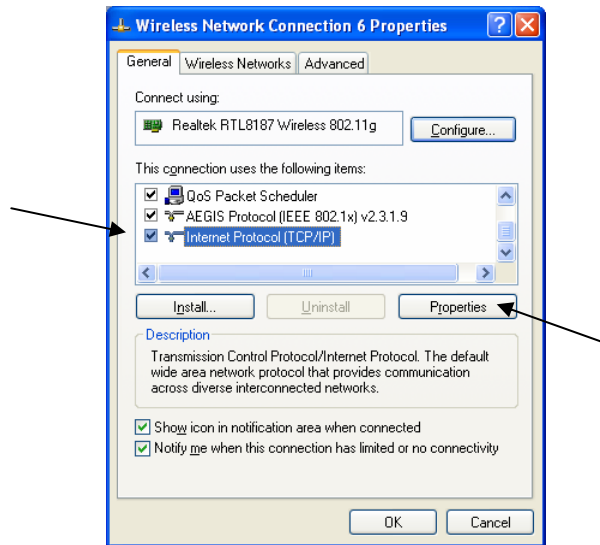
6. When the connection is established, the “defaultSSID” network will display “Connected”.



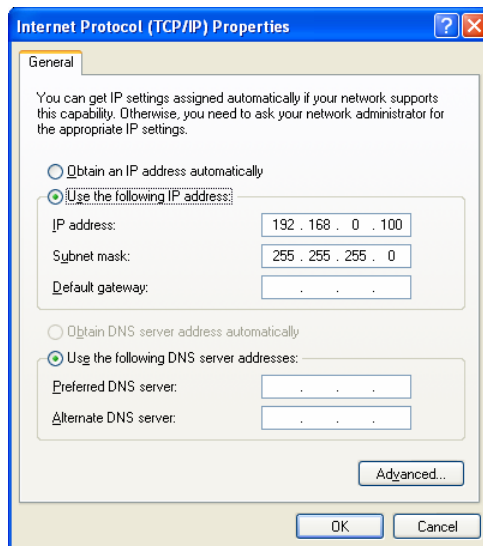
7. Click “Change advanced settings” to display the *Network Connections Properties* dialog. (You can also access the *Network Connections Properties* dialog by right clicking on Network Connections listing and selecting **Properties**.)



8. Scroll down and select TCP/IP on the list.



9. Click **Properties**.



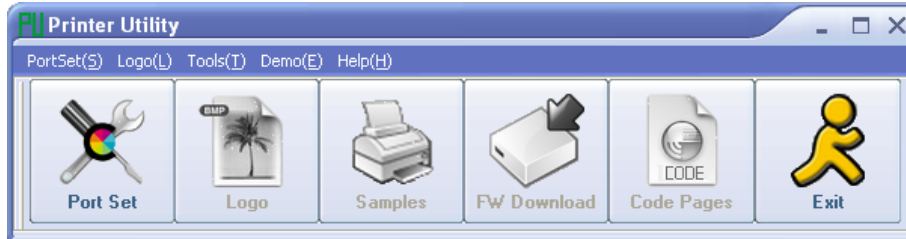
10. Select the “Use the following IP address option button and enter the IP address “192.168.0.100” and the Subnet mask “255.255.255.0” as shown above.

11. Click **OK** and then click **OK** on the Network Properties dialog.

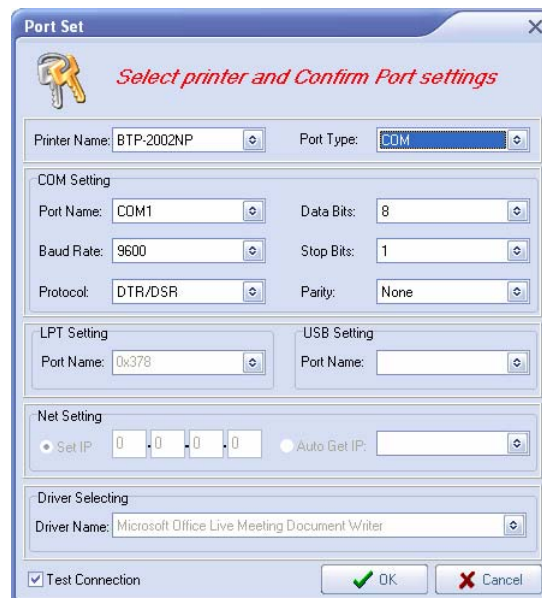
Testing the Wireless Connection

Use the Printer Utility to test your connection.

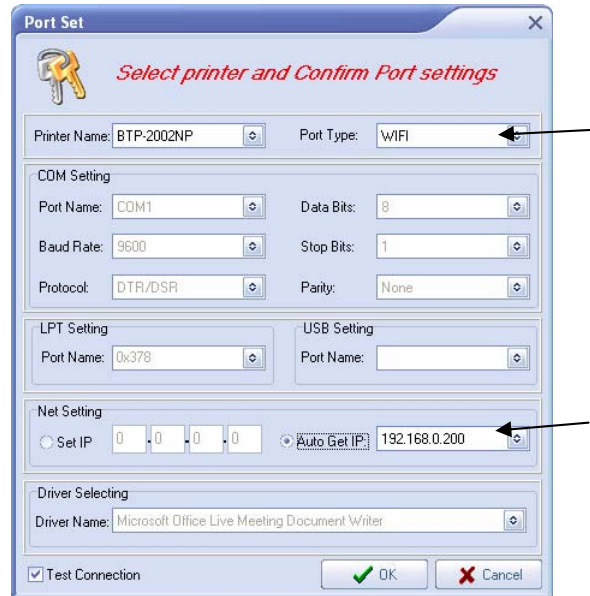
1. Start Utility.exe.



2. Click **Port Set**.



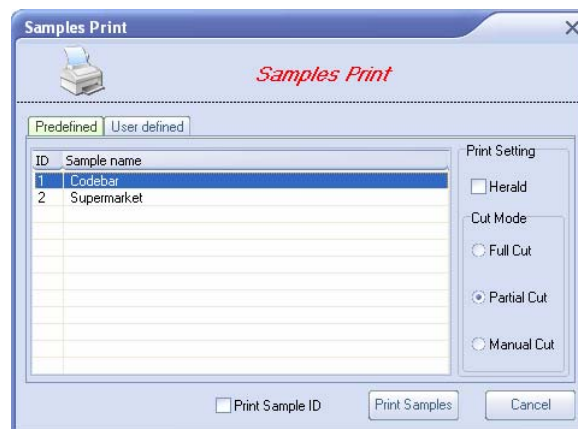
3. Select the Port Type “WIFI” and click the “Auto Get IP” option button. After a short wait, the IP address will display.



4. Click **OK**. The SNBC Printer in the wireless network will feed one line. The Utility menu will display with all option buttons enabled.



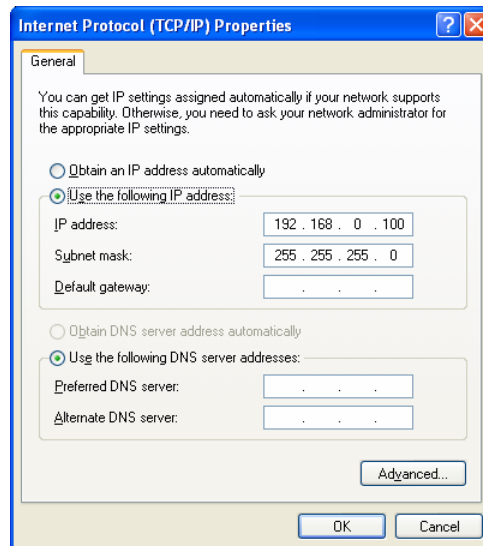
5. Click **Samples**.



6. Select a sample and click **Print Samples**. The printer will print.

In Case of Difficulty

1. BY recommends and supports the UB801R-V2 Wireless USB Adaptor at both the printer and PC. Verify that all adaptors are of the same type.
2. Verify that any local network connections are disabled.
3. Disable, and then re-enable the SSID network.
4. Disable the firewall.
5. Verify TCP/IP setting for the wireless network. Verify that the settings on the Properties dialog are as below. The “Obtain an IP address automatically” option button should be disabled; the “Use the following IP address” option button selected; the IP address set to: 192.168.0.100 and the Subnet mask set to: 255.255.255.0.



6. WIFI card settings can be restored to default at the printer. There is a reset button on the rear of the interface located underneath a small access hole. The hole is visible without removing the I/F card. Insert a small diameter object (such as the end of a paperclip) into the hole. You will hear a noticeable click when the reset button is engaged. With the reset button depressed, power on the printer. Perform a printer self-test to verify the card settings.
7. If necessary, use the ‘BYNetWinConfig V2.0’ tool to change printer settings, such as the IP address (possibly necessary for security reasons). This utility will also reset WIFI card settings and generate a test print page.