

SNBC WIFI Installation Guide

Note: All steps in this document are required for installations using the UB801R_v2 USB Wireless Adaptor (CRS part number 132105) on the PC. If you are using your PC's internal wireless adaptor, do not complete "PC Driver Installation" or page 2 or "Verifying Your Wireless Connection" on page 5.

Resources Required

Hardware

- Printer: SNBC WIFI Interface
- PC: RealTek RTL8187 Wireless 802.11g 54 Mbps USB 2.0 Network Adaptor

Utilities & Files

- Wireless USB Adaptor RTL 8189.zip
- BYNetWinConfig.exe (Network Configuration Utility—posted online in SNBC_Network_ConfigurationV2.0.zip)

Preparing the Printer

1. Install the WIFI Interface card.
2. Perform a printer self-test (power on with the feed key pressed.)
3. Verify firmware and interface:

| | |
|--------------------|---------------------|
| Main Firmware | :FV4.110 (or later) |
| Interface Type | :Wi-Fi |
| SSID | :defaultSSID |
| Mode | :Ad-Hoc |
| Interface Firmware | :FV1.001 (or later) |
| IP Address | :192.168.0.200 |
| MAC Address | :00C001 3A49FF |
| SUBNET Mask | :255.255.255.0 |
| GATEWAY | :192.168.0.1 |
| DHCP | :Disabled |

PC Driver Installation

Note: Do Not Attach the WIFI device until instructed to do so.

1. Unzip “Wireless USB Adaptor RTL 8189.zip” and execute “setup.exe”. You will be prompted to run the application and select a language (English). The installation wizard window displays:



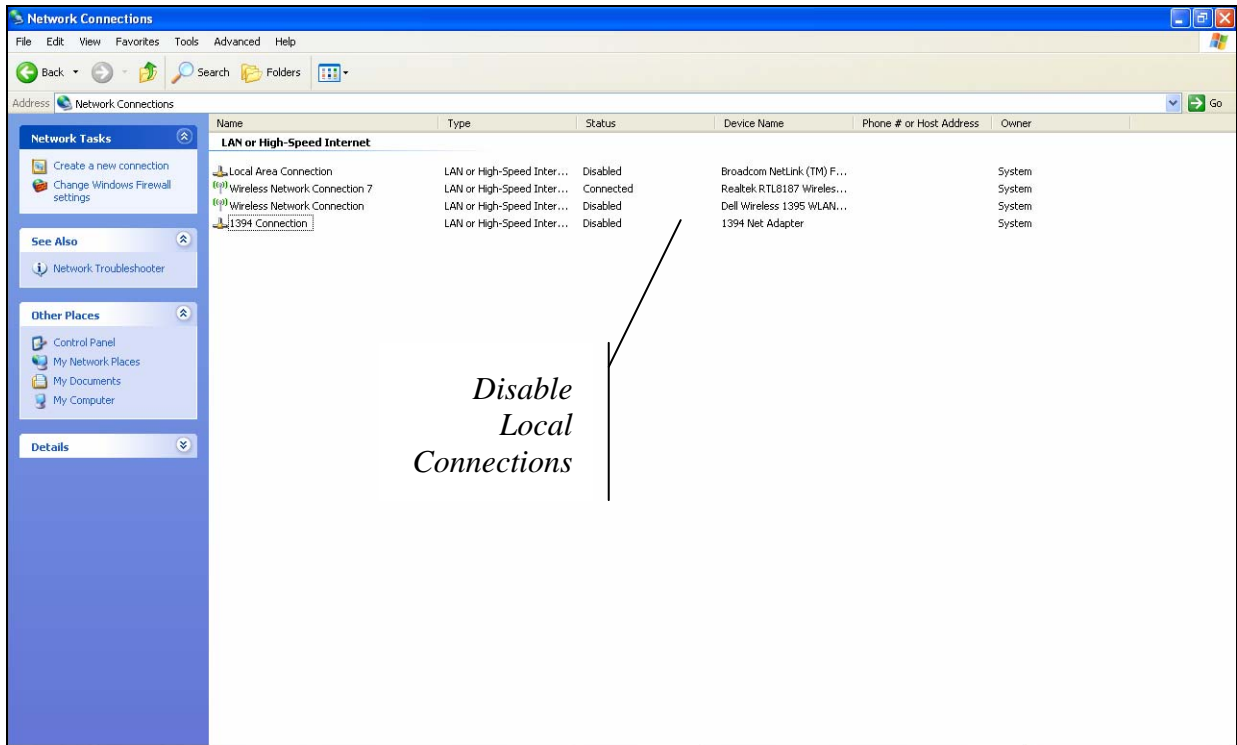
2. Click **Next**. The application will install. When complete, the Wizard Complete dialog displays.



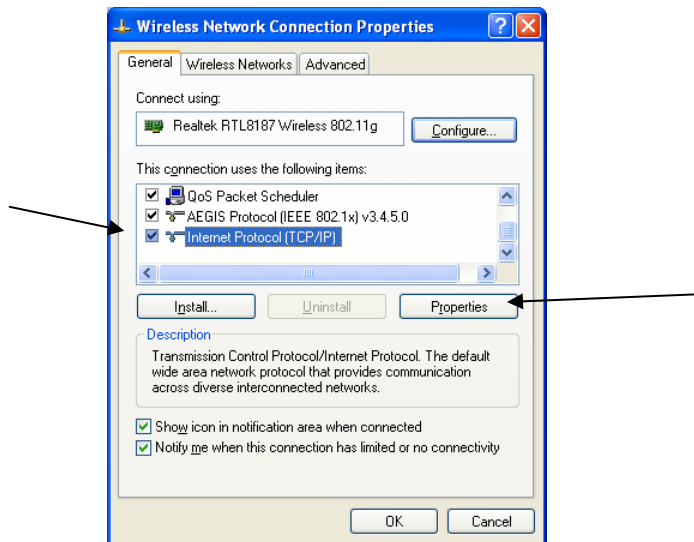
3. Click **Finish**. The prompt: “You can plug in your wireless adaptor now” displays momentarily.
4. Plug in the Adapter. The” Found New Hardware” message displays, followed by the message “The hardware is installed and ready to use.”

Configuring Network Connections

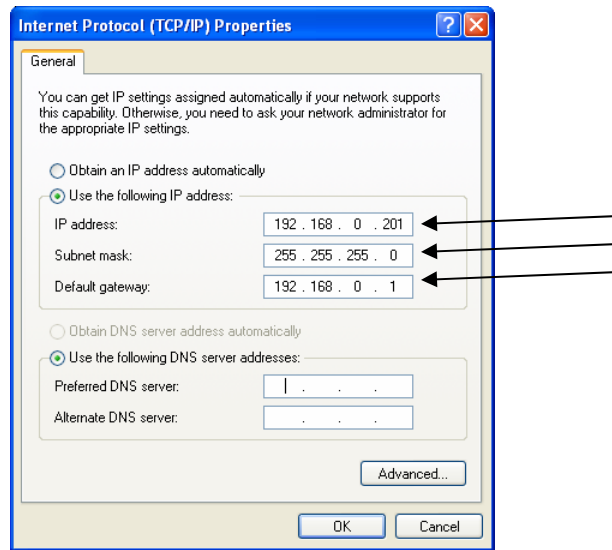
1. To view network connections, click **Start, Control Panel** and then select **Network Connections**.
2. If a local internet connection is enabled, it must be disabled. Right-click on the network connection on the list and select **Disable** for all connections present.



3. Select the wireless connection on the list, right click and select properties. The Wireless Network Connection Properties dialog displays. Scroll down and select Internet Protocol (TCP/IP) as shown below:



4. . Click **Properties**. The Internet Protocol (TCP/IP) Properties dialog displays.



5. Set the IP address, Subnet mask, and Default gateway as shown. Click **OK** and then click **Close** on the Network Properties dialog.

Note: The IP address must be in the range of the PC network. In this example, the printer IP address is 192.168.0.200 and the network range is 192.168.0.1 to 192.168.0.201.

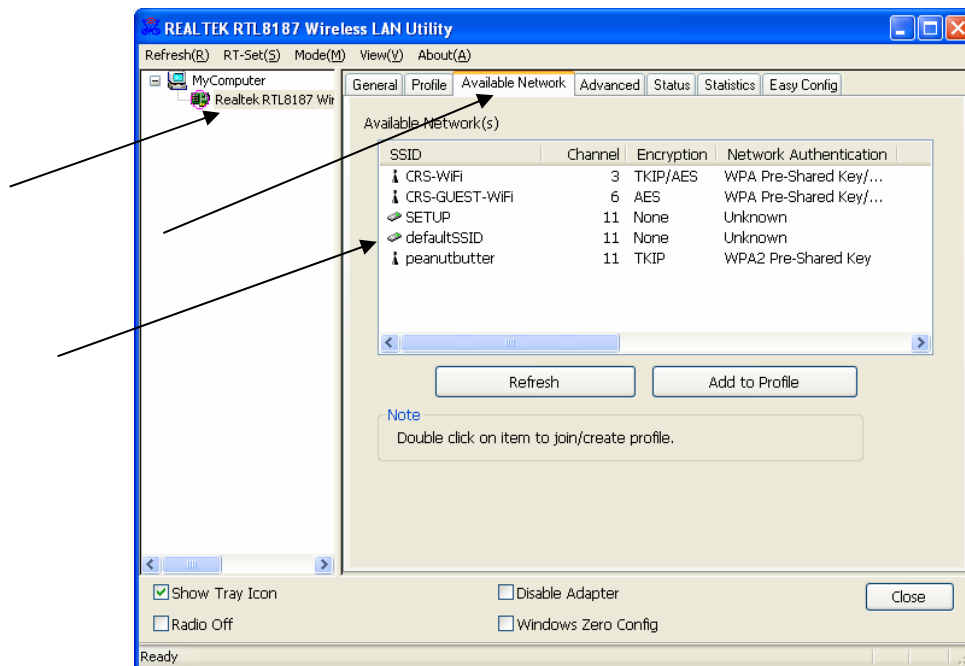
Verifying Your Wireless Connection

1. Examine the Windows task bar at the lower-right of your screen. The wireless signal strength indicator displays. If the wireless connection is not connected (as shown) there will be no bars displayed.

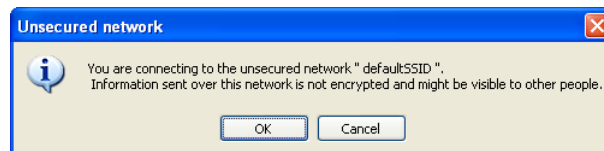


Signal strength indicator

2. If not connect, place your cursor over the indicator and right-click your mouse. Select “Open Config Utility”.
3. The REAL TEK RTL8187 Wireless LAN Utility window displays. Select the Utility and select the Available Network tab.



4. Double click defaultSSID in the list of available networks. The Unsecured network warning dialog displays. Click **OK**.



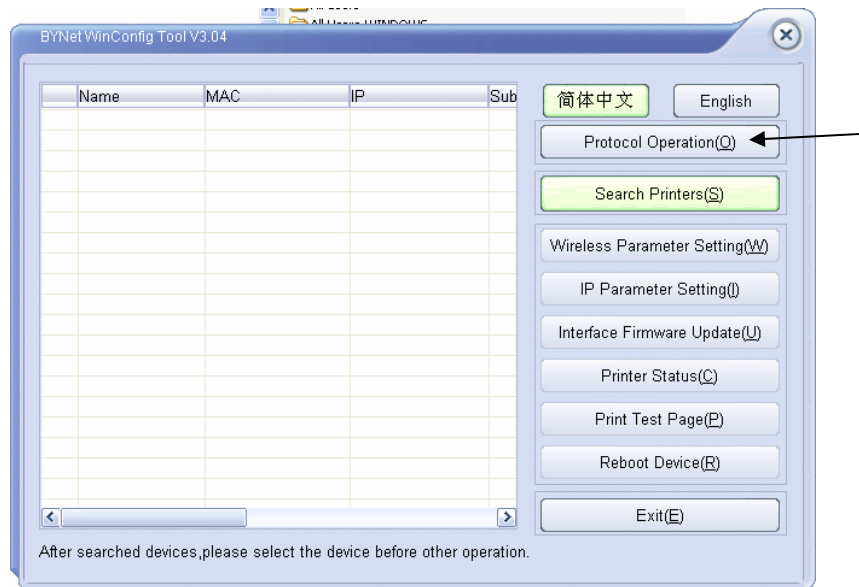
5. The signal strength indicator should now show an active connection. You have now verified the installation of the wireless adaptor on your PC.



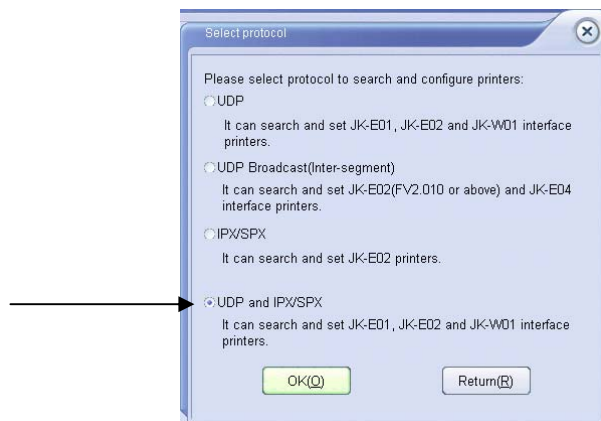
Verify Connection to the Printer

Note: In most cases you will need to turn OFF the Windows firewall in order to establish connection with the printer. Choose **Start** and **Control Panel**. From the **Control Panel** choose **Security Center** and then choose **Windows Firewall**. From the Windows Firewall dialog, choose **OFF** (not recommended).

1. Turn the SNBC wireless printer ON.
2. From the SNBC Printer Support page in the Dealer Area of www.crs-usa.com, download the BYNet WinConfig Tool V3.04. Start the Utility.



3. Click **Protocol Operation**.



4. Verify that the last option (**UDP and IPXSPX**) is selected. Click **OK**. The Utility window returns.

5. From the BYNet WinConfig Tool V3.04 window click **Search Printers**.

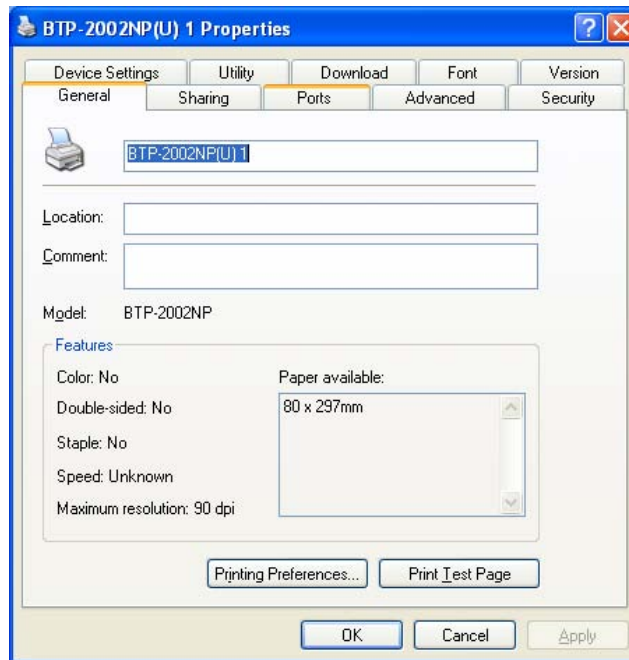


6. The printer will display on the list and the OK message will display. You have now verified that the SNBC printer listed is communicating with your PC wireless adaptor.

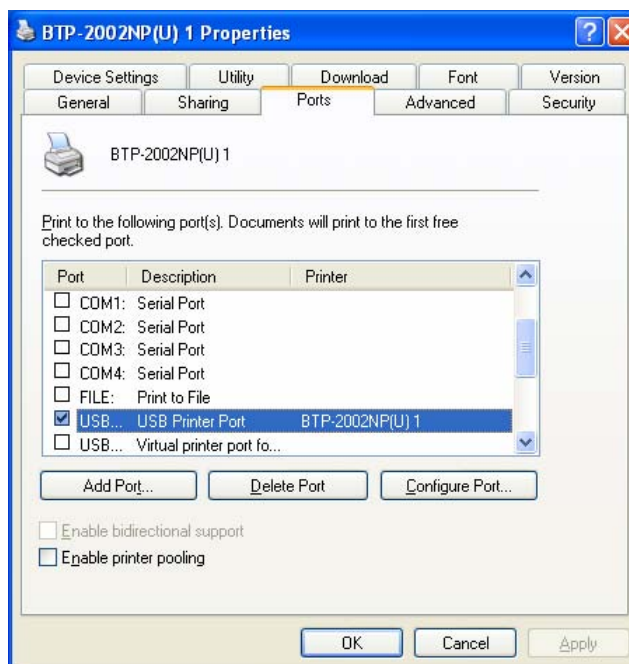
Add the Printer to the Network

With the printer now set the correct IP address, you can add it to the network. (The printer driver must be loaded to continue.)

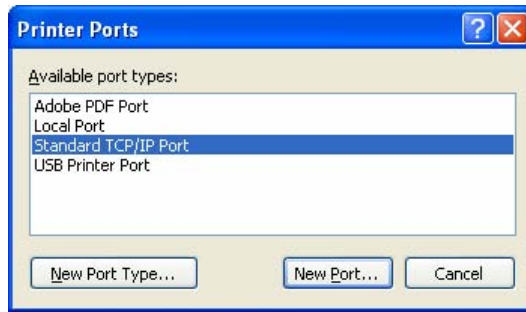
1. (This example uses Windows XP.) Select **Control Panel** and then **Printers and Faxes**. Find the SNBC printer on the Printers and Faxes list, right-click on it, and choose **Properties**.



2. Select the **Ports** tab.



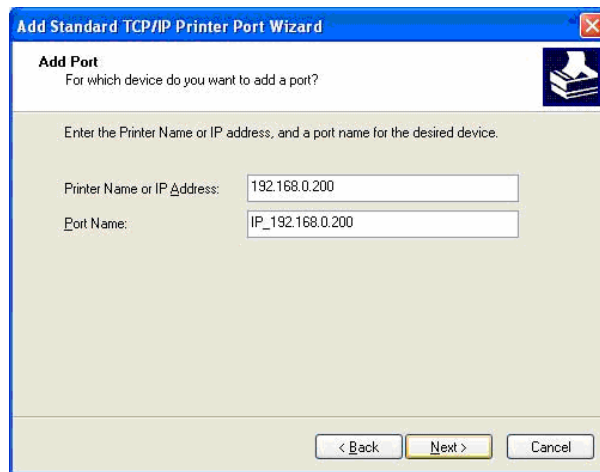
3. Click the **Add Port...** button.



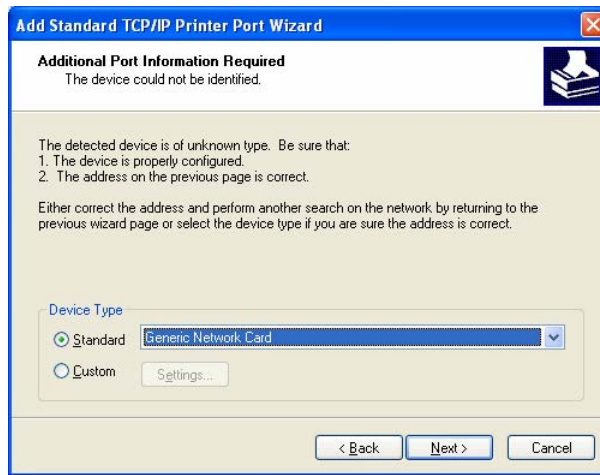
4. Select *Standard TCP/IP Port* and click **New Port...** The Printer Port Wizard starts.



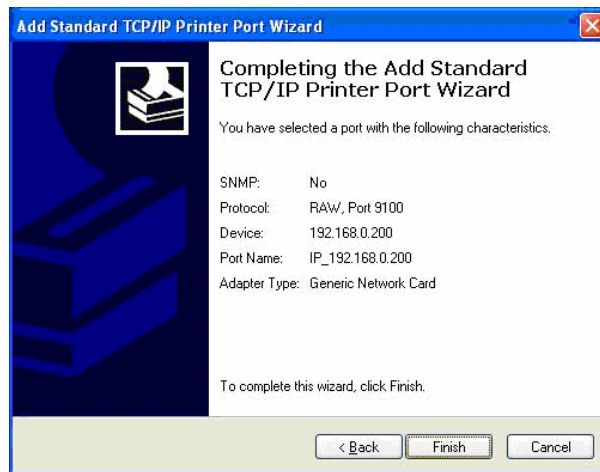
5. Click **Next>**.



6. In the Printer Name or IP Address field, enter the IP Address of the printer to be assigned. The Port Name will default to the IP address entered. Click **Next>**.

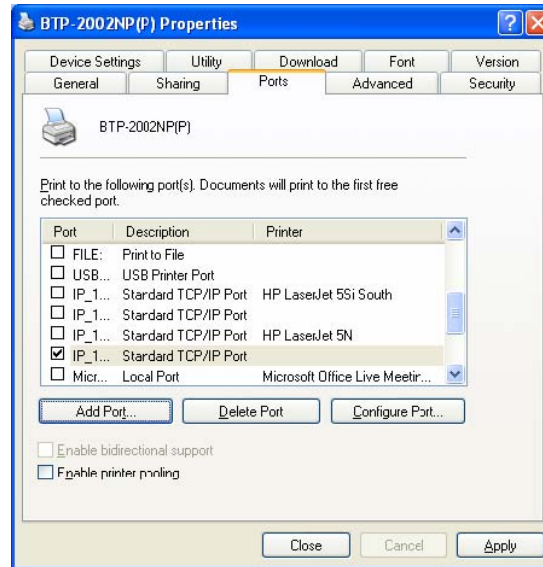


7. With the Device Type option set to *Standard*, click **Next>**.



8. Click **Finish**.

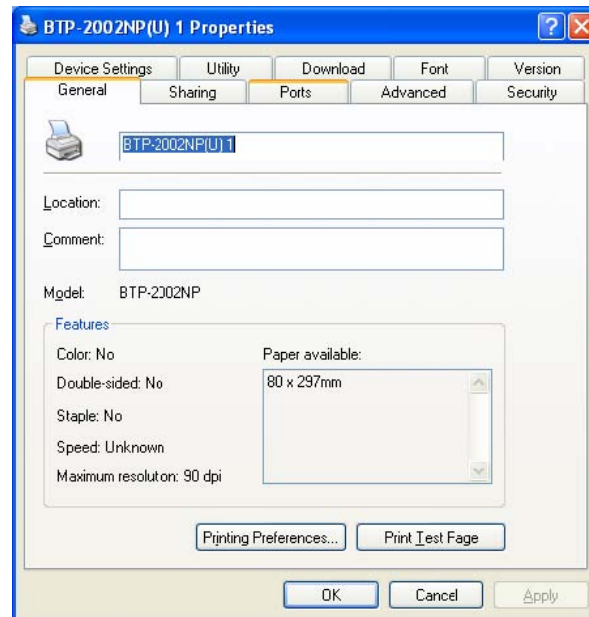
9. The Printer *Properties dialog/Ports tab* will display with the standard TCP/IP port added and selected.



10. Click **Apply** and then click **Close**. The printer is now added to the network.

Print a Test Page

1. Select Control Panel and then Printers and Faxes. Find the SNBC printer on the Printers and Faxes list, right-click on it, and choose Properties.



2. Click Print Test Page.