

SAM4S

FORZA 1500

POWERFUL AND FLEXIBLE POS SYSTEM



The powerful and flexible FORZA POS system is a highly configurable solution that allows you to design the perfect workstation. A variety of hardware component choices provide optimum performance and reliability advantages to best fit your needs in harsh retail and foodservice environments. Add the optional vertical mount to rotate the display and add the SAM4s GCUBE thermal receipt printer to create a sleek looking, powerful kiosk terminal.

- Choice of 4th Generation Celeron J1900, 7th Generation Core™ i3 7100U or Core™ i5 7200U Processors
- Solid State Drive and Projected Capacitive Touch (PCT) Improve Performance and Reliability
- 15" Screen / 4:3 Aspect Ratio
- Vivid LED Backlight
- Variety of Available Integrated Customer Display and MCR Options
- Designed For Superior Serviceability and Easy Installation

Shown with cube form factor printer (sold separately).



Cafeterias



**Tobacco Stores /
Liquor Stores**



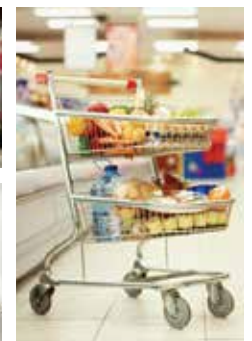
**Dusty
Environments**



**Ice Cream / Quick
Service**



**Bars / Table Service
Restaurants**



**Convenience /
Small Grocery**

Choice of:



FORZA 1500 Touch Screen Terminals



Two Additional USB Ports – Choice of Processors



Optional Integrated 2-Line LCD Customer Display



Choose From 9.7" or 15" Optional Integrated Rear LCD Customer Displays



Easy Access to Ports – Easily Replace SSD and RAM Without Tools

Options and Upgrades

Configure your system with these easy to add options:

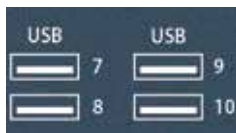
- Integrated Customer Display – 2 Lines x 20 Characters
- Integrated 15" or 9.7" Customer LCD
- Integrated 15" Customer Touch LCD
- Integrated Fingerprint Reader
- Two Additional Serial Ports
- WiFi Module

Connectivity

LAN
 USB (4)
 COM4 (Powered)
 Cash Drawer
 Display Port
 HDMI Option
 Line Out (Audio)
 COM1 (Powered)
 COM2 (Powered)
 COM3 (Powered)
 DC Out (12V)
 (For Rear LCD)
 DC In (12V)



Choose From Three Optional Port Boards



Specifications

	Celeron J1900	Core i3 or i5
Processor:	Intel Celeron J1900	Core i3 7100U / i5 7200U
Cores / Threads:	Quad Core / 4 Threads	Dual Core / 4 Threads
Cache Memory:	2MB	3MB
Display LCD:	15" LCD with LED Backlighting	
Resolution:	1024 x 768 / Aspect Ratio 4:3	
Brightness:	Adjustable Up to 350 cd/m ²	
Integrated Speakers:	Integrated 2W Speaker	
Chipset (PCH):	System on Chip	
Touch:	Projected Capacitive Multi-Touch Panel (PCT)	
MCR:	Integrated USB Interface Triple Track MCR	
Mass Storage Device:	128GB 2.5" Solid State Drive	
RAID Support:	No	Yes (Special Order)
RAM Memory	4GB DDR3 (1 Slot) Expandable To 8GB	4GB(i3) / 8GB(i5) DDR4 (2 Slots) Expandable to 16GB
Video Memory:	Shared System Memory	
Serial Ports:	COM1 / COM2 / COM3 = DB9M With Pin 9 (0V/+5V/+12V) COM4 = RJ45 Pin 1 (0V/+5V/+12V) Voltage Selectable By BIOS	
USB Ports:	Six Total V2.0	Two V2.0 (Front) Four V3.0 (Rear)
Cash Drawer Port:	RJ12, 12V or 24V Selectable By BIOS – Maximum 2 Drawers – Supports Drawer Compulsion	
LAN Port:	RJ45 10/100/1000 Base-T (Giga LAN) RealTek RTL8111G	
Video Port:	One Display Port for Second LCD (Maximum Resolution 4096 x 2304 @ 60Hz)	
HDMI Port:	Not Applicable	One (4096 x 2304 @ 24Hz)
Audio Port:	One Line-Out	
Mic Port:	Not Applicable	
Power Supply:	60W, 12V/5A External Power Adaptor 100-240V 50-60Hz	
Current / Power Usage:	0.26A / 31.2W without Rear LCD 0.32A / 38.4W with Rear LCD	
Environment:	32° F to 95° F / 0% to 90% RH Non-Condensing	
Compatible O/S:	POSReady 7 Win 7 Pro / Win 10 Pro Win 10 IoT Ent. 2016 Entry	Win 10 IoT Ent. 2016 Value Win 10 Pro
Dim. / Weight – Base:	11-3/8"W x 8-1/2"D x 12"H	
Unit:	14-5/8"W x 8-1/2"D x 17"H / 11.79 lbs.	
Shipping Carton:	19"L x 11"W x 20"H / 16 lbs.	
Safety and EMI:	KC, CE, FCC, CB, NRTL, RoHS	