



# HM516

## 10" Android Rugged Tablet



### **A Truly Affordable Purpose-Built Tablet**

Run your retail or hospitality business more efficiently with the stylish, reliable and space-saving HM516 Android Rugged Tablet. The 10.1 inch, bezel-free and wide screen display is designed with Projected Capacitive (PCAP) touch technology that helps to extend the operating life and allow multi-touch control. Use the ports in the docking station to connect to a wide range of peripheral devices.

- 10.1" Wide Screen
- Bezel-Free, PCAP Multi-Touch Screen
- Android Operating System
- Standard Integrated Card Reader
- Docking Station Includes I/O Expansion Ports
- Sturdy Hand Strap Standard
- Meets MIL-STD810G Standards for Shock and IP54 Standards for Exposure to Water and Dust



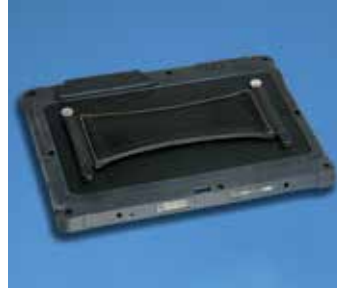
# HM516 – 10" Android Rugged Tablet



**Stylish, Space-Saving Rugged Tablet and Docking Station**



**Lift the Rear Panel to Access the Docking Station's Ports**



**Standard Sturdy Hand Strap**



**Integrated Card Reader Standard**

## Features

- Front and Rear Cameras
- Integrated Card Reader
- 1 Watt Speaker
- Sturdy Hand Strap
- 3 LED Indicators
- Protected Against Dust and Water Sprayed From All Directions (IP Grade IP54)
- Withstands a Drop of 3 Feet on to Concrete (MIL-STD-810G)
- HM516 Rugged Tablet Includes a Built-In Battery, MCR, and a Charger with Cable
- Docking Station Includes Power Adaptor and Cord

## Optional Devices / Upgrades

- The HM516 Tablet is available with these optional upgrades:
- Integrated 1D Barcode Scanner
  - Integrated 2D/1D Barcode Scanner
  - 3G (WCDMA GPRS) – Special Order

## Specifications

		HM516
<b>Processor:</b>		Freescale i.mx6 Quad-Core Arm Cortex-A9 1.0GHz
<b>Operating System:</b>		Android 4.2 Multi-Language
<b>Display:</b>		10.1" TFT LCD (LED Back-Light)
<b>Resolution:</b>		1280 x 800
<b>Brightness:</b>		330 cd/m2
<b>Touch Panel:</b>		True-Flat Projected Capacitive Touch
<b>Memory:</b>		2GB RAM
<b>Storage:</b>		16GB eMMC
<b>Camera –</b>	<b>Front:</b>	2 Megapixel Camera
	<b>Back:</b>	5 Megapixel Camera (Supports 2D Barcode Function)
<b>Wireless –</b>	<b>Wi-Fi:</b>	WiFi802.11bgn 2.4GHz
	<b>Bluetooth:</b>	Integrated Bluetooth V4.0
<b>Speaker:</b>		8 Ohm, 1 Watt Speaker
<b>Audio:</b>		3.5mm Socket
<b>MCR:</b>		Standard Integrated Triple Track Card Reader
<b>Battery –</b>	<b>Type:</b>	8000mAh (Minimum)
	<b>Life:</b>	6 Hours
<b>I/O Interface:</b>		Micro-SD Slot / SIM Card Slot / USB / Micro-USB
<b>Tablet Connector:</b>		24 Pin Pogo Style Connector
<b>Docking Station I/O –</b>	<b>USB:</b>	Three USB2.0 (2 Rear Panel / 1 Right Side)
	<b>LAN:</b>	One RJ45 (100Mbps LAN)
	<b>Serial:</b>	Two RS232C
	<b>VGA:</b>	One VGA Reserved for Second Display
	<b>Cash Drawer:</b>	One RJ11 – 12V/24V (24V Default)
	<b>DC Input:</b>	One DC Jack (12V)
<b>Power –</b>	<b>Tablet:</b>	5V/2.0A External Power Adaptor 100-240V 50/60Hz
	<b>Docking Station:</b>	12V/3.33A External Power Adaptor 100-240V 50/60Hz
<b>Temperature –</b>	<b>Operating:</b>	32° F to 104° F (0° C to 40° C)
	<b>Storage:</b>	-4° F to 140° F (-20° C to 60° C)
<b>Humidity –</b>	<b>Operating:</b>	20% to 80% RH (Non-Condensing)
	<b>Storage:</b>	10% to 90% RH (Non-Condensing)
<b>Dimensions –</b>	<b>Tablet:</b>	10-7/8"W x 7-5/8"H x 7/8"D
	<b>Tablet/Docking Station:</b>	11"W x 6-5/8"H x 7-1/16"D
<b>Safety and EMI:</b>		FCC Class-B / CE Class-B / RoHS



All product and company names are trademarks, service marks or registered trademarks of their respective owners. All features and specifications are subject to change without notice.

© 2016, Printed in U.S.A.

LIT-278

