

Hisense

HM518

10" Rugged Tablet POS System



Rugged and Lightweight POS System for Harsh Environments

Run your retail or hospitality business more efficiently with the stylish, reliable and space-saving HM518 Rugged Tablet POS with Windows® operating system. The 10.1 inch, bezel-free and wide screen display is designed with Projected Capacitive (PCAP) touch technology that helps to extend the operating life and allow multi-touch control. Use the ports in the docking station to connect to a wide range of peripheral devices.

- 10.1" Wide Screen
- Bezel-Free Flat PCAP Multi-Touch
- Standard Integrated Card Reader
- Docking Station Includes I/O Expansion Ports
- Sturdy Hand Strap Standard
- Meets MIL-STD810G Standards for Shock and IP54 Standards for Exposure to Water and Dust



Bluetooth™



UNIVERSAL SERIAL BUS



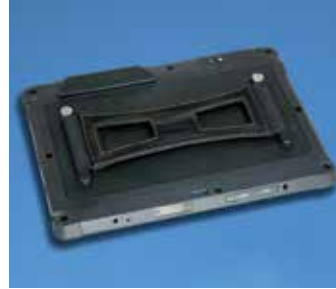
HM518 – 10" Rugged Tablet POS System



Stylish, Space-Saving Rugged Tablet Includes Docking Station



Lift the Rear Panel to Access the Docking Station's Ports



Standard Sturdy Hand Strap



Integrated Card Reader Standard

Features

- Front and Rear Cameras
- Integrated Card Reader
- 1 Watt Speaker
- Sturdy Hand Strap
- 3 LED Indicators
- Protected Against Dust and Water Sprayed From All Directions (IP Grade IP54)
- Withstands a Drop of 4 Feet Onto Concrete (MIL-STD-810G)
- HM518 Rugged Tablet Includes a Built-In Battery and MCR.

Optional Devices / Upgrades

The HM518 Tablet is available with these optional upgrades:

- Docking Station Includes Power Adaptor and Cord
- Integrated 1D Barcode Scanner
- Integrated 2D/1D Barcode Scanner
- 3G (WCDMA GPRS) – Special Order
- GPS – Special Order

Specifications

| | | HM518 |
|------------------------------|--------------------------------|---|
| Processor: | | Intel Celeron Processor N2807 1.58GHz |
| Operating System: | | Windows Pro 8.1 / 10 Home / 10 Enterprise |
| Display: | | 10.1" TFT LCD (LED Back-Light) |
| Resolution: | | 1280 x 800 |
| Brightness: | | 330 cd/m ² |
| Touch Panel: | | True-Flat Projected Capacitive Touch |
| Memory: | | 2GB RAM (4GB RAM on Windows 10 Enterprise) |
| Storage: | | 32GB eMMC (Up to 64GB) |
| Camera: | | 5 Megapixel Camera (Supports 2D Barcode Function) |
| Wireless – | Wi-Fi: | WiFi802.11a/b/g/n/ac 2.4GHz / 5GHz |
| | Bluetooth: | Integrated Bluetooth V4.1 |
| Speaker: | | 8 Ohm, 1 Watt Speaker |
| Audio: | | 3.5mm Socket |
| MCR: | | Standard Integrated Triple Track Card Reader |
| Battery – | Type: | 4000mAh (7.4V) |
| | Life: | 6 Hours |
| I/O Interface: | | Micro-SD Slot / SIM Card Slot / USB / Micro-USB |
| Tablet Connector: | | 24 Pin Pogo Style Connector |
| Docking Station I/O – | USB: | Three USB2.0 (2 Rear Panel / 1 Right Side) |
| | LAN: | One RJ45 (100Mbps LAN) |
| | Serial: | Two RS232C |
| | VGA: | One VGA Reserved for Second Display |
| | Cash Drawer: | One RJ11 – 12V/24V (24V Default) |
| | DC Input: | One DC Jack (12V) |
| Power Supply: | | 12V/3.33A External Power Adaptor 100-240V 50/60Hz |
| Temperature – | Operating: | 32° F to 104° F (0° C to 40° C) |
| | Storage: | -4° F to 140° F (-20° C to 60° C) |
| Humidity – | Operating: | 20% to 80% RH (Non-Condensing) |
| | Storage: | 10% to 90% RH (Non-Condensing) |
| Dimensions – | Tablet: | 10-7/8"W x 7-5/8"H x 7/8"D |
| | Tablet/Docking Station: | 11"W x 6-5/8"H x 7-1/16"D |
| Safety and EMI: | | FCC Class-B / CE Class-B / RoHS |

1D or 2D Barcode Scanner

Triple-Track MCR

5MP Rear Camera

Scan Button

Sturdy Hand Strap

Lift Panel to Access Docking Station's Ports

Convenient Cable Management Slots



Micro SD Slot 3G Slot

LED Indicators

Power Button

IC Card Slot

USB

Headset Jack

12V DC Jack

Unlock Button

Power Button

