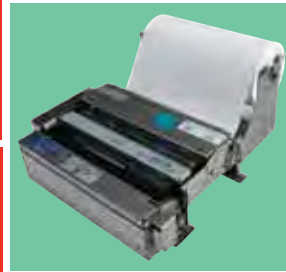


SNBC Kiosk Printers



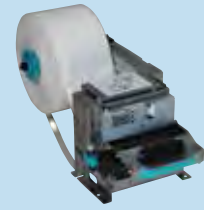
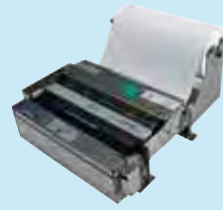
SNBC Extraordinary Value!

SNBC Extraordinary Value high-speed thermal kiosk printers include advanced features and are specially suited for unattended printing applications. All of the SNBC kiosk printers are simple to use and easy to maintain.

SNBC, a leading manufacturer of specialty printers and mechanisms, is widely recognized for quality and value. Look to SNBC for the world's most affordable label, POS and kiosk printers.

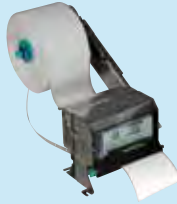
Download a pdf
of this document
now!





		SNBC BK-L218II		SNBC BK-C310	SNBC BK-T080II	SNBC BK-T680 1ST	SNBC BK-T680 2ST	SNBC BK-T6112 1ST	SNBC BK-T6112 2ST	
Printer	Item Numbers	132301 Vertical 132317 Horizontal	132300 Vertical 132319 Horizontal	132350 Serial 132350-USB	132323 USB	132336 USB+Serial	132335 USB+Serial	132337 USB+Serial 132339 USB+Ethernet	132338 USB+Serial	
	Print Method	Direct Thermal Line		Direct Thermal Line	Direct Thermal Line	Direct Thermal Line	Direct Thermal Line	Direct Thermal Line	Direct Thermal Line	
	Resolution	203 DPI x 203 DPI	300 DPI x 305 DPI	203 DPI x 203 DPI	203 DPI	203 DPI	203 DPI	203 DPI	203 DPI	
	Print Width	8-1/2" (216mm)		3-1/8" (80mm)	3-1/8" (80mm)	3-1/8" (80mm)	3-1/8" (80mm)	4" (104mm)	4" (104mm)	
	Print Length	Maximum	Standard: 23-3/8" (594mm) / Special: 39-3/8" (1,000mm)		23-5/8" (600mm)	17-3/4" (450mm)	31-1/2" (800mm)	31-1/2" (800mm)	31-1/2" (800mm)	31-1/2" (800mm)
		Minimum	3-1/4" (82.5mm)		2-3/4" (70mm)	2-3/4" (70mm)	2-3/4" (70mm)	2-3/4" (70mm)	3-9/16" (80mm)	3-9/16" (80mm)
	Print Speed (per Second)	Single Side	4-7/8" (125mm)	3-15/16" (100mm)	5-7/8" (150mm)	5-7/8" (150mm)	10-13/16" (275mm)		7-7/8" (200mm)	
		2ST						5-7/8" (150mm)		3-15/16" (100mm)
Memory	SDRAM	8 MB	8 MB	2 MB	2 MB	8 MB Standard / 32MB Factory Option	8 MB Standard / 32MB Factory Option	8 MB	8 MB	
	Flash / Factory Option	1 MB / 2 MB or 4 MB Factory Option		4 MB	1 MB / 2 MB or 4 MB Factory Option	2 MB Standard / 4MB Factory Option	2 MB Standard / 4MB Factory Option	4 MB	4 MB	
Sensors	Presenter / Retractor / Paper Out / Shutter Position / Cover Open / Paper Mark / THP Overheating Protection / Paper Near End		Presenter / Retractor / Paper Out / Paper Pull / Paper Jam / TPH Temp. / TPH Position / Paper Near End	Paper Load / Black Mark / Paper End / Paper Near End / Presenter / TPH Position / TPH Overheating Protection	Paper Low / Black Mark / TPH Position / TPH Overheating Protection	Paper Low / Black Mark / TPH Position / TPH Overheating Protection	Paper Load / Black Mark / Paper Near End / TPH Position / TPH Overheating Protection	Paper Load / Black Mark / Paper Near End / TPH Position / TPH Overheating Protection		
Paper	Paper Type	Continuous Paper / Folder Paper / Marked Paper		Continuous Paper / Marked Paper	Continuous Paper / Marked Paper	Continuous Paper / Marked Paper	Continuous Paper / Marked Paper / 2ST	Continuous Paper / Marked Paper	Continuous Paper / Marked Paper / 2ST	
	Paper Width (mm)	210mm ~ 216mm Continuous Adjustment		80mm	69.5mm ~ 79.5mm ± 0.5mm	48mm ~ 82.5mm Continuous Paper Adjustment	48mm ~ 82.5mm Continuous Paper Adjustment	79.5mm ~ 112mm ± 0.5mm Continuous Paper Adjustment	79.5mm ~ 112mm ± 0.5mm Continuous Paper Adjustment	
	Diameter	Outside	8" (203mm) Maximum		5-7/8" (150mm) /	7-3/16" (180mm) Maximum	3-15/16" (100mm) / 7-3/16" (180mm) Maximum	10-15/64" (260mm) Maximum	10-15/64" (260mm) Maximum	
		Inside	1" (25.4mm) or 2" (50mm)		3/4" (18mm) / 1" (25.4mm) / 1.5" (40mm)	3/4" (18mm) / 1" (25.4mm) / 1.5" (40mm)	3/8" (10mm) ~ 2-3/8" (60mm)	3/8" (10mm) ~ 2-3/8" (60mm)	3/4" (18mm) ~ 2-3/8" (60mm)	3/4" (18mm) ~ 2-3/8" (60mm)
	Thickness	60um ~ 100um		45um ~ 100um	60um ~ 100um	55um ~ 100um	55um ~ 100um	55um ~ 100um	55um ~ 100um	
	Paper Cutting Method	Full Cut		Full Cut / Partial Cut (Without Presenter)	Full Cut (Without Presenter)	Full Cut	Full Cut	Full Cut	Full Cut	
	Presenter	Paper Out Speed	15-3/4" (400mm) per Second Maximum		23-5/8" (600mm) per Second	15-3/4" (400mm) per Second	23-5/8" (600mm) ~ 39-3/8" (1,000mm) per Second	23-5/8" (600mm) ~ 39-3/8" (1,000mm) per Second	23-5/8" (600mm) ~ 39-3/8" (1,000mm) per Second	23-5/8" (600mm) ~ 39-3/8" (1,000mm) per Second
		Paper Retraction Speed	15-3/4" (400mm) per Second		23-5/8" (600mm) per Second	15-3/4" (400mm) per Second	39-3/8" (1,000mm) per Second	39-3/8" (1,000mm) per Second	39-3/8" (1,000mm) per Second	39-3/8" (1,000mm) per Second
Paper Presenter Mode		Retract Paper / Hold Paper / Eject Paper (Selectable)		Retract Paper / Hold Paper / Eject Paper (Selectable)	Retract Paper / Hold Paper / Eject Paper (Selectable)	Retract Paper / Hold Paper / Eject Paper (Selectable)	Retract Paper / Hold Paper / Eject Paper (Selectable)	Retract Paper / Hold Paper / Eject Paper (Selectable)	Retract Paper / Hold Paper / Eject Paper (Selectable)	
Fonts / Barcode	Barcode	1D	ITF / UPC-A / UPC-E / EAN8 / EAN13 / CODABAR / Code 39 / Code 93 / Code 128		UPC-A / UPC-E / EAN8 / EAN13 / CODABAR / Code 39 / Code 93 / Code 128 / ITF / GS1-128 / GS1 DataBar	UPC-A / UPC-E / EAN8 / EAN13 / CODABAR / Code 39 / Code 93 / Code 128 / ITF	UPC-A / UPC-E / EAN8 / EAN13 / CODABAR / Code 39 / Code 93 / Code 128 / ITF	UPC-A / UPC-E / EAN8 / EAN13 / CODABAR / Code 39 / Code 93 / Code 128 / ITF	UPC-A / UPC-E / EAN8 / EAN13 / CODABAR / Code 39 / Code 93 / Code 128 / ITF	
		2D	PDF417 / QR		PDF417 / QR / Maxicode / 2D / GS1	PDF417 / QR / GS1	PDF417 / QR / GS1	PDF417 / QR / GS1	PDF417 / QR / GS1 / Databar	
	Fonts	Font A	12 x 24		12 x 24	12 x 24	12 x 24	12 x 24	12 x 24	
		Font B	9 x 17		9 x 17	9 x 17	9 x 17	9 x 17	9 x 17	
		Optional	24 x 24 Asian Character Set		24 x 24 Asian Character Set	24 x 24 Asian Character Set	24 x 24 Asian Character Set	24 x 24 Asian Character Set	24 x 24 Asian Character Set	
Character Modification	Rotate 0°, 90°, 180°, 270° / Underline / Emphasize / Reverse / Enlarge 1 ~ 6 Times		Rotate 0°, 90°, 180°, 270° / Underline / Emphasize / Reverse / Enlarge 1 ~ 6 Times	Rotate 0°, 90°, 180°, 270° / Underline / Emphasize / Reverse / Enlarge 1 ~ 6 Times	Rotate 0°, 90°, 180°, 270° / Underline / Emphasize / Reverse / Enlarge 1 ~ 6 Times	Rotate 0°, 90°, 180°, 270° / Underline / Emphasize / Reverse / Enlarge 1 ~ 6 Times	Rotate 0°, 90°, 180°, 270° / Underline / Emphasize / Reverse / Enlarge 1 ~ 6 Times	Rotate 0°, 90°, 180°, 270° / Underline / Emphasize / Reverse / Enlarge 1 ~ 6 Times		
Int.	Interface	Serial+USB / Serial+Parallel		USB+Serial	USB	USB+Serial / USB+Ethernet	USB+Serial / USB+Ethernet	USB+Serial	USB+Serial	
	Drivers	Windows 10 / 8.1 / 8 / 2000 / XP / 2003 / VISTA / XP Embedded / Win 7 / Linux		Windows 10 / 8.1 / 8 / 2000 / XP / 2003 / VISTA / XP Embedded / Win 7 / Linux	Windows 10 / 8.1 / 8 / 2000 / XP / 2003 / VISTA / XP Embedded / Win 7 / Linux	Windows 10 / 8.1 / 8 / 2000 / XP / 2003 / VISTA / XP Embedded / Win 7 / Linux	Windows 10 / 8.1 / 8 / 2000 / XP / 2003 / VISTA / XP Embedded / Win 7 / Linux	Windows 10 / 8.1 / 8 / 2000 / XP / 2003 / VISTA / XP Embedded / Win 7 / Linux	Windows 10 / 8.1 / 8 / 2000 / XP / 2003 / VISTA / XP Embedded / Win 7 / Linux	
Power / Operation	Reliability	MTBF	360,000 Hours		360,000 Hours	360,000 Hours	360,000 Hours	360,000 Hours	360,000 Hours	
		Printhead Life	100km Characters		150km Characters	100km Characters	100km Characters	100km Characters	100km Characters	
		Cutter Life	500,000 Cuts		1,000,000 Cuts	1,500,000 Cuts	1,000,000 Cuts	1,000,000 Cuts	300,000 Cuts	
	Input	AC	110 ~ 240V		110 ~ 240V	110 ~ 240V	110 ~ 240V	110 ~ 240V	110 ~ 240V	
		Hz	50 ~ 60		50 ~ 60	50 ~ 60	50 ~ 60	50 ~ 60	50 ~ 60	
	Output DC	DC	24V ± 10% / 2.5A		24V ± 10% / 2.5A	24V ± 10% / 2.5A	24V ± 10% / 2.5A	24V ± 10% / 2.5A	24V ± 5% / 2.5A	
		Watts	60W		60W	60W	60W	60W	60W	
	Temperature	Operating	40° ~ 113°		32° ~ 122°	40° ~ 113°	32° ~ 122°	32° ~ 122°	32° ~ 113°	
		Storage	- 40° ~ 140°		- 13° ~ 140°	- 40° ~ 140°	- 40° ~ 140°	- 40° ~ 140°	- 40° ~ 140°	
	Humidity (Non-Condensing)	Operating	20% ~ 90%		20% ~ 90%	20% ~ 90%	20% ~ 90%	20% ~ 90%	20% ~ 90%	
Storage		20% ~ 93%		15% ~ 98%	20% ~ 93%	20% ~ 93%	20% ~ 93%	20% ~ 93%		
Mechanism Dimensions (Inches W x H x D)	8-3/8 x 3-13/16 x 11-9/16		4-9/16 x 3 x 5-3/4	5-3/16 x 4-13/16 x 13-1/4	4-13/16 x 4-3/4 x 6-5/16	4-13/16 x 4-3/4 x 6-5/16	6-3/16 x 4-3/4 x 7-1/16	6-3/16 x 4-3/4 x 7-1/16		
Weight (Without Paper Holder)	9.70 lbs.		2.65 lbs.	4.87 lbs. (Approx.)	3.98 lbs. (w/o Paper Holder/Roll)	3.98 lbs. (w/o Paper Holder/Roll)	4.87 lbs. (w/o Paper Holder/Roll)	4.87 lbs. (w/o Paper Holder/Roll)		
Safety and EMI	CE / CB / UL / FCC		CE / CB / UL / FCC	CE / CB	CE / CB / UL / FCC	CE / CB / UL / FCC	CE / CB / UL / FCC	CE / CB / UL / FCC		

Blank = Not Applicable / O = Optional / S = Standard



		SNBC BT-T080R	SNBC BT-T080Plus	
Printer	Item Numbers	132325 USB 132326 USB+Serial	1322354 USB+Serial	
	Print Method	Direct Thermal Line	Direct Thermal Line	
	Resolution	203 DPI	203 DPI	
	Print Width	3-1/8" (80mm)	Maximum 3-1/8" (80mm)	
	Print Length	Maximum		
		Minimum		
	Print Speed (per Second)	Single Side	5-7/8" (150mm)	Maximum 5-7/8" (150mm)
		2ST		
	Memory	SDRAM	2MB	2MB
		Flash	1MB / 2MB or 4MB Factory Option	4MB
Sensors	Paper Low / Black Mark / Paper Near-End / TPH Overheating Protection			
Paper	Paper Type	Continuous Paper / Marked Paper	Continuous Paper / Marked Paper	
	Paper Width (mm)	48mm - 82.5mm	82.5 / 79.5 / 76 / 69.5 / 57.5mm	
	Diameter	Outside	80 - 180mm Maximum	5-7/8" (150mm) Maximum
		Inside	3/4" (18mm) - 2-3/8" (60mm)	1" (25.4mm) Minimum
	Thickness	60um - 100um	60um - 100um	
	Paper Cutting Method	Full Cut / Partial Cut (Selectable)	Full Cut / Partial Cut (Selectable)	
	Presenter	Paper Out Speed		
Paper Retraction Speed				
Paper Presenter Mode				
Fonts / Barcode	Barcode	1D	UPC-A / UPC-E / EAN8 / EAN13 / CODABAR / Code 39 / Code 93 / Code 128 / ITF	
		2D	PDF417 / QR / Maxicode / GS1	
	Fonts	Font A	12 x 24	12 x 24
		Font B	9 x 17	9 x 17
		Optional	24 x 24 Asian Character Set	24 x 24 Asian Character Set
Character Modification	Rotate 0°, 90°, 180°, 270° / Underline / Emphasize / Reverse / Enlarge 1 - 6 Times	Rotate 0°, 90°, 180°, 270° / Enlarge 1 - 6 Times		
Int.	Interface	USB / USB+Serial	USB / Serial	
	Drivers	Windows 10 / 8.1 / 8 / 2000 / XP / 2003 / VISTA / XP Embedded / Win 7 / Linux	Windows 10 / 8.1 / 8 / 2000 / XP / 2003 / VISTA / XP Embedded / Win 7 / Linux	
Power / Operation	Reliability	MTBF	360,000 Hours	370,000 Hours
		Printhead Life	150km Characters	100km Characters
		Cutter Life	1,500,000 Cuts	1,000,000 Cuts
	Input	AC	110 - 240V	110 - 240V
		Hz	50 - 60	50 - 60
	Output DC	DC	24V ± 10% / 2.5A	24V ± 10% / 1.5A
		Watts	60W	24W
	Temperature	Operating	32° - 122°	32° - 122°
		Storage	- 40° - 140°	- 40° - 140°
	Humidity (Non-Cond.)	Operating	20% - 90%	20% - 90%
		Storage	20% - 93%	20% - 93%
Mechanism Dimensions (Inches W x H x D)	6-3/16 x 4-13/16 x 3-15/16	5 x 3-1/2 x 3-1/2		
Weight (Without Paper Holder)	3.75 lbs. (Approx.)	Approx. 1 lb. Without Paper Holder		
Safety and EMI	CE / UL			

Blank = Not Applicable / O = Optional / S = Standard